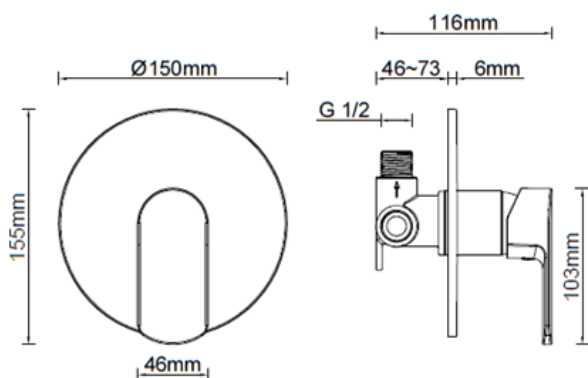
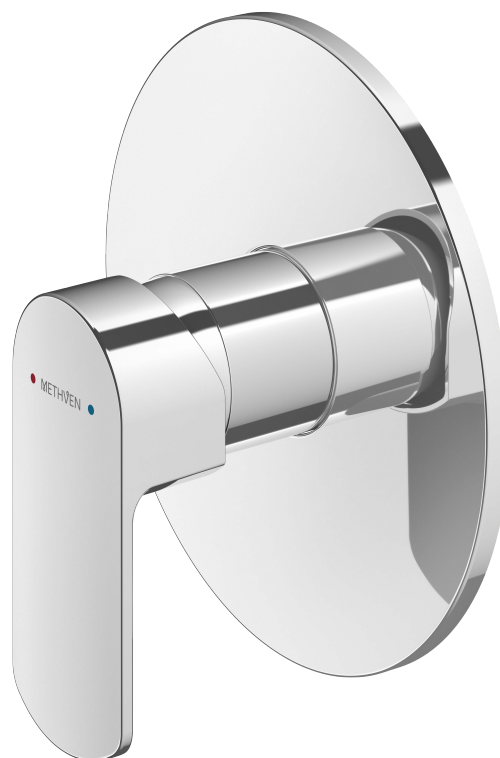


KEA SHOWER MIXER



CLASSIFICATION: Suitable for all pressures

INLET CONNECTIONS: 1/2" BSP

WORKING PRESSURE: 55 - 500kPa

OPERATING TEMPERATURE: 5 °C - 80 °C

- Hardwearing Metal Faceplate
- Dezincification Resistant (DR) brass bodies last longer and help maintain water quality
- Fitted with ceramic discs instead of conventional washers, ensuring durability and no-drip water efficiency.

KEAPSCP

Chrome

exclusive to
plumbingworld